

NAPKIN HOLDER TEMPLATE

Section 1 of 3

BY: Sandy Clements

CUT FROM 12" X 12" CARDSTOCK OR CHIPBOARD



PLACE GLUE ON BACK



PLACE GLUE ON FRONT



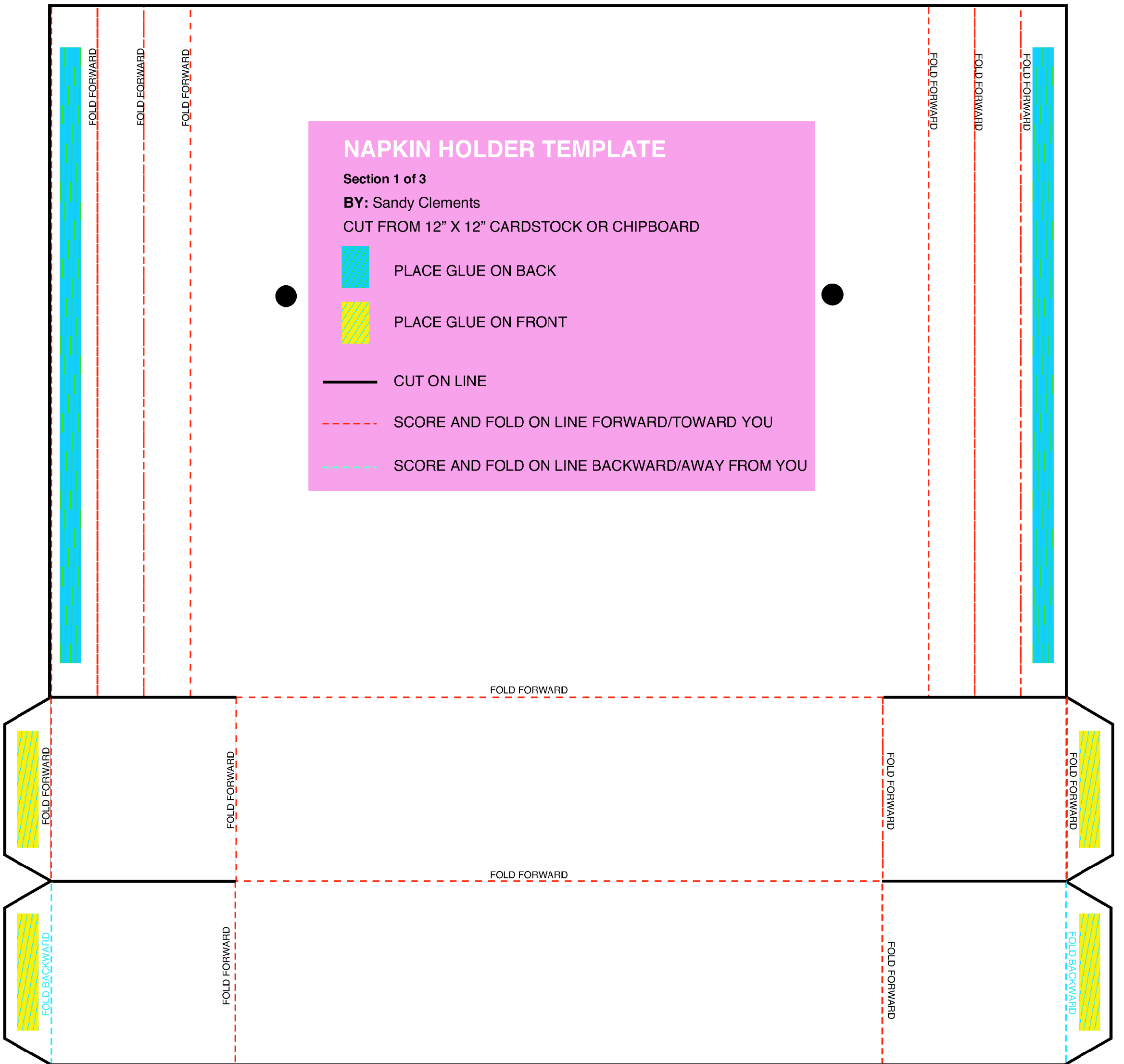
CUT ON LINE



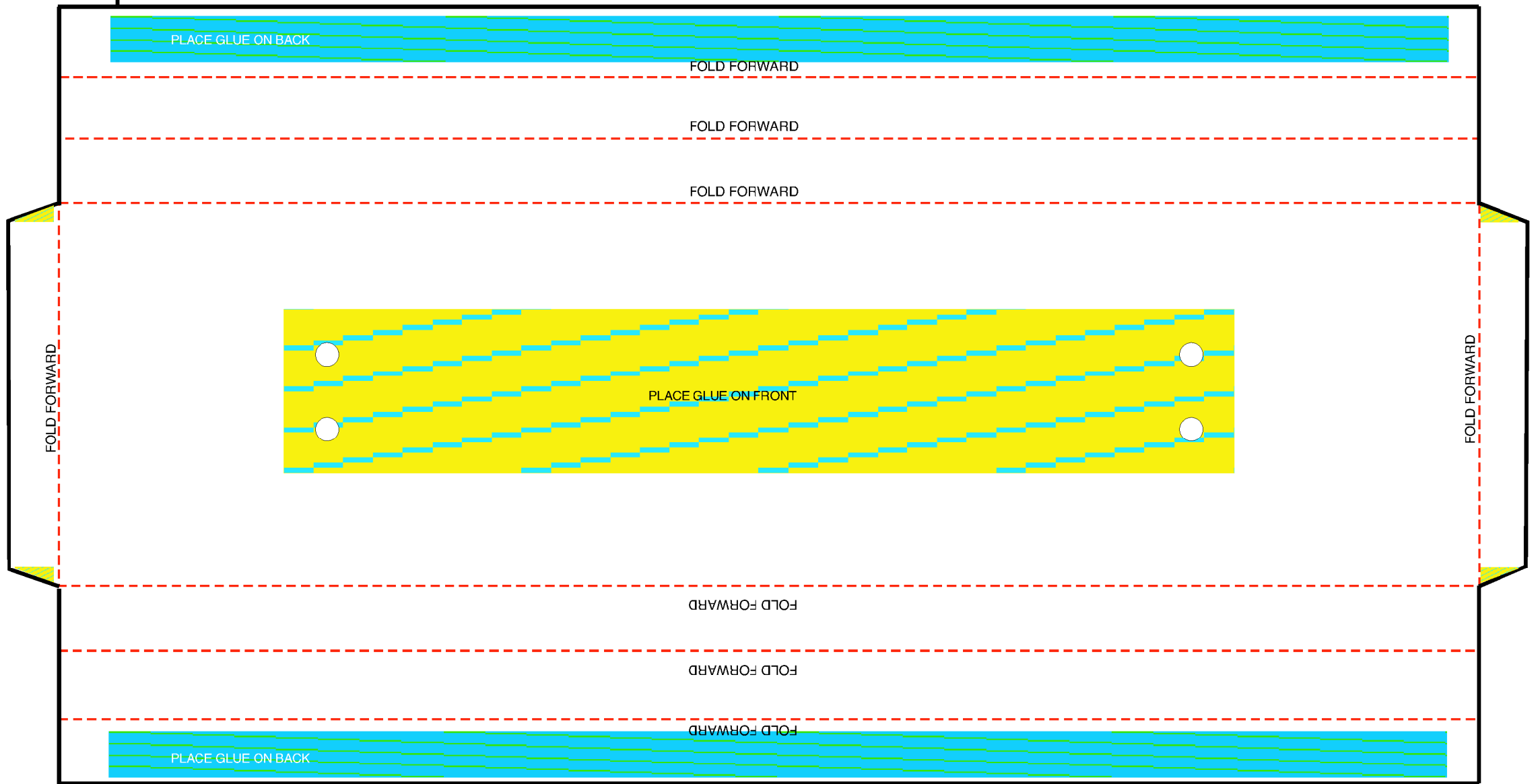
SCORE AND FOLD ON LINE FORWARD/TOWARD YOU



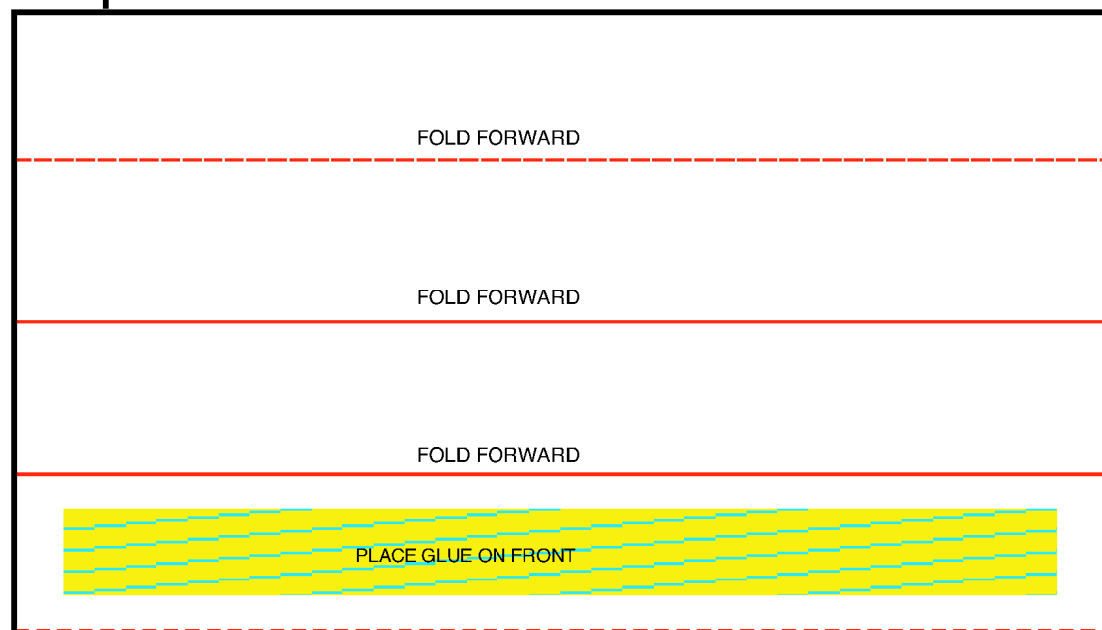
SCORE AND FOLD ON LINE BACKWARD/AWAY FROM YOU



Napkin Holder Base 2 of 3








Napkin Holder Bar 3 of 3



NAPKIN HOLDER TEMPLATE - Base - Bar

Sections 2 and 3 of 3 **BY: Sandy Clements**

CUT FROM 12" X 12" CARDSTOCK OR CHIPBOARD

-  PLACE GLUE ON BACK
-  PLACE GLUE ON FRONT
-  CUT ON LINE
-  SCORE AND FOLD ON LINE FORWARD/TOWARD YOU
-  SCORE AND FOLD ON LINE BACKWARD/AWAY FROM YOU